

## Part 1: General

### 1.1 Description of Work

1. Work in this section includes furnishing and installation of extruded aluminum overhead hanger rod style canopies or Alumi-Tech Canopy, as designed by Midwest Canopy, and manufactured by Midwest Canopy in Columbus, Ohio.
2. Related Items and Considerations
  1. Flashing of various designs may be required.
  2. Caulking will be provided where top of canopy meets building. Specialty flashing is an option, Specialty flashing may be supplied by Midwest Canopy if requested.
  3. Determine wall construction, make-up and thickness. Shop drawings provided by Midwest Canopy will detail components, brackets and pre-installation requirements.
  4. Ensure adequate wall condition to carry canopy loads where required.
  5. Consider water drainage away from canopy where necessary.
  6. Any necessary removal or relocation of existing structures, obstructions or materials.

### 1.2 Quality Assurance

1. Products meeting these specifications established standard of quality required as manufactured Midwest Canopy.

### 1.3 Field Measurement

1. Confirm dimensions prior to preparation of shop drawings when possible.
2. If requested, supply manufacturer standard literature and specifications for canopies.
3. Submit shop drawings showing structural component locations/positions, material dimensions and details of construction and assembly.

### 1.4 Performance Requirements

1. Canopy must conform to local building codes and snow and wind load requirements.
2. If required, stamped calculations can be provided, and must be signed and sealed by an engineer licensed within the state canopy is installed.
3. Approved Engineers for Stamped Calculations
  - a. Reverence Engineering, 600 B St, San Diego, CA 92101, 614-354-1152

## Alumi-Tech Canopy Specifications

b. Sullaway Engineering, Inc., 10815 Rancho Bernardo Rd Ste 260, San Diego, CA 92127.  
858-321-5150

C. Joseph Lewis, P.E., 3260 W. Henderson Rd., Suite 10, Columbus, OH 43220, 614-326-2806

### 1.5 Deliver, Storage, Handling

1. Deliver and store all canopy components in protected areas. Delivery provided by Midwest Canopy.
2. Freight and crating is an option if requested and can be arranged with a 3<sup>rd</sup> party.

## Part 2: Products

### 2.1 Design

#### Alumi-Tech Canopy

##### Design Contacts:

**Gary Hanes**, Midwest Canopy, 2291 Scioto Harper Drive, Columbus, OH 43204  
614-344-5087 x 701

**Chad Galbraith**, Midwest Canopy, 2291 Scioto Harper Drive, Columbus, OH 43204  
614-344-5087 x 702

### 2.2 Engineering, Manufacturer, Distributor/Installer

1. **Distribution in the following States:** Michigan, Ohio, Kentucky, Tennessee, South Carolina, North Carolina, Virginia, West Virginia, Pennsylvania, New York, Vermont, New Hampshire, Maine, Maryland, Rhode Island, Connecticut, New Jersey, Delaware, Washington and Massachusetts, Indiana, Illinois, Wisconsin, Minnesota, North Dakota, South Dakota, Nebraska, Kansas, Iowa, Missouri, Arkansas, Oklahoma, Louisiana, Mississippi, Alabama, Georgia, Texas, Florida

**Midwest Canopy**, 2291 Scioto Harper Drive, Columbus, OH 43204, 614-344-5087

# Alumi-Tech Canopy Specifications

## 2. 2.2 Materials

1. Decking shall consist of extruded aluminum (6") interlocking flat decking, alloy 6063-T6
  1. Or decking can be optional custom printed, aluminum composite to have a "wood" look.
2. Intermediate framing members shall be extruded aluminum, alloy 6063-T6, in profile and thickness shown in shop drawings.
3. Hanger rods and attachment hardware shall be a standard finish.
4. Fascia shall be standard extruded 6", 8", 10" or 12" J style - 0.125" aluminum. Additional Fascia details, extensions, "C" Channel available based on selection.

## 3. 2.3 Finishes

1. Powder-Coating
2. Custom Color Painted to match any SW, PPG or RAL color.

## 2.4 Fabrication

1. All Midwest Canopy, canopy Frame systems are preassembled and welded and fastened to seamless frame system.
2. Decking and Hanger Rod components may be assembly at construction site.
3. All connections shall be mechanically assembled utilizing rust-free plated fasteners.
4. Concealed drainage. Water shall drain from covered surfaces into intermediate trough and be directed to Front Scupper or Downspout depending on selection.

## 2.5 Engineering

1. DESIGNED IN STRICT ADHERENCE TO CHAPTER 16 OF THE OHIO BUILDING CODE
2. BUILDING RISK CATEGORY II
3. ULT. DESIGN WIND SPEED = 115MPH (3 SEC GUST)
4. IW = 1.00
5. DESIGN SNOW LOAD = 20 PSF
6. DESIGN LIVE LOAD = 20 PSF
7. ADD'L 5 PSF UNIFORM ICE LOAD
8. SS=0.166, S1=0.066

## Part 3: Execution 3.1 Inspection

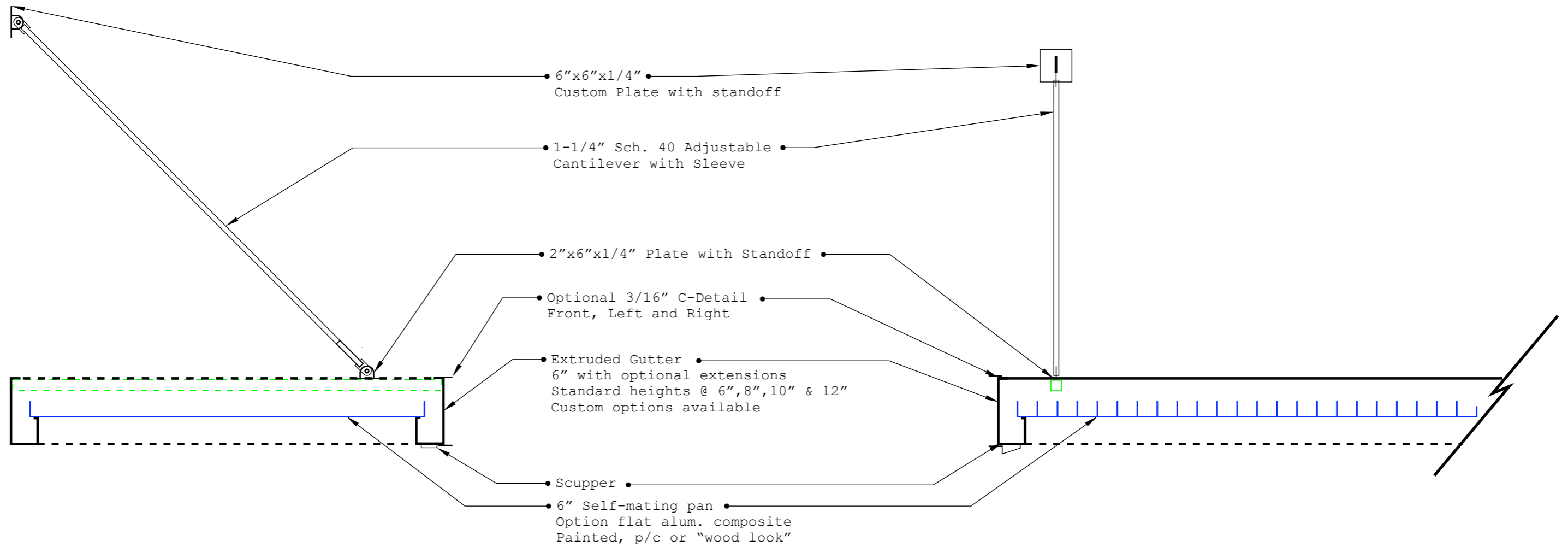
1. Confirm that surrounding area is ready for the canopy installation.
2. Erection shall be performed by Midwest Canopy and scheduled after all concrete, masonry and roofing in the area is completed for a safe installation.

# Alumi-Tech Canopy Specifications

## 3.2 Installation

1. Installation shall be in strict accordance with shop drawings. Particular attention should be given to protecting the finish during handling and erection.
2. Typical install includes installation into blocking, blocking by others
3. Though bolt into steel is optional and can be used for installation.
4. Caulking will be provided where top of canopy meets building. Specialty flashing is an option, Specialty flashing may be supplied by Midwest Canopy if requested.
5. Installation will only be scheduled if site conditions meet requirements to install in a safe manner.
6. Installation, entire system shall be left in a clean condition.

# ALUMI-TECH CANOPY EXAMPLE DRAWINGS



Midwest Canopy  
2291 Scioto Harper Drive  
Columbus, Ohio  
43204

614-344-5087  
www.midwestcanopy.com

<p>PROJECT:      SAMPLE DRAWINGS                   Aluminum-Tech Canopy</p>	<p>ADDRESS:</p>	<p>REV: R6.5 06/2021</p>
---	-----------------	--------------------------